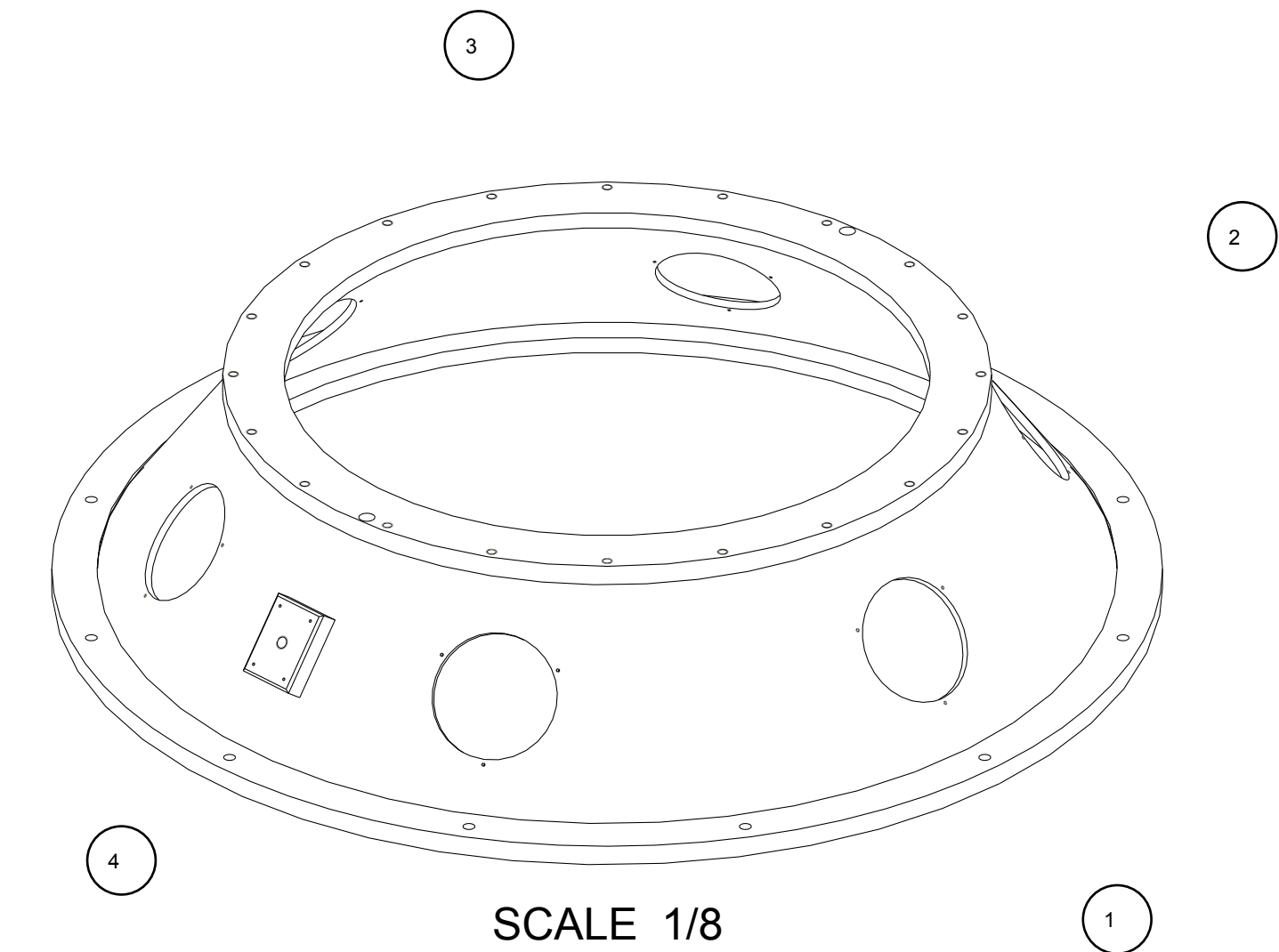
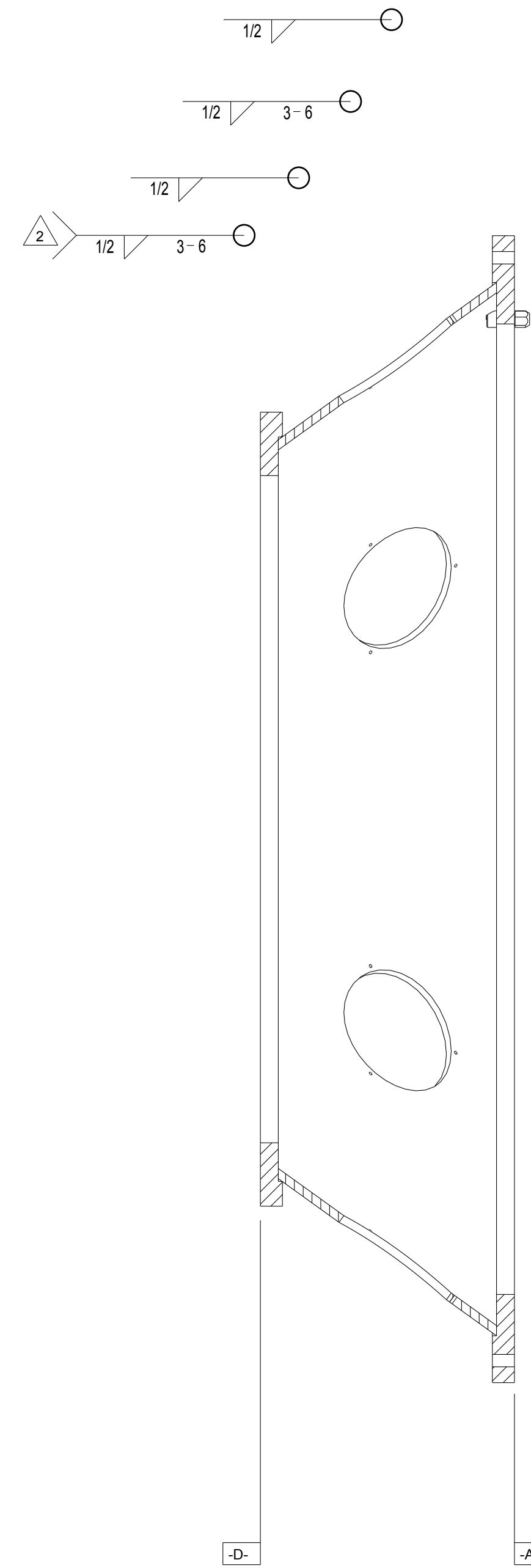
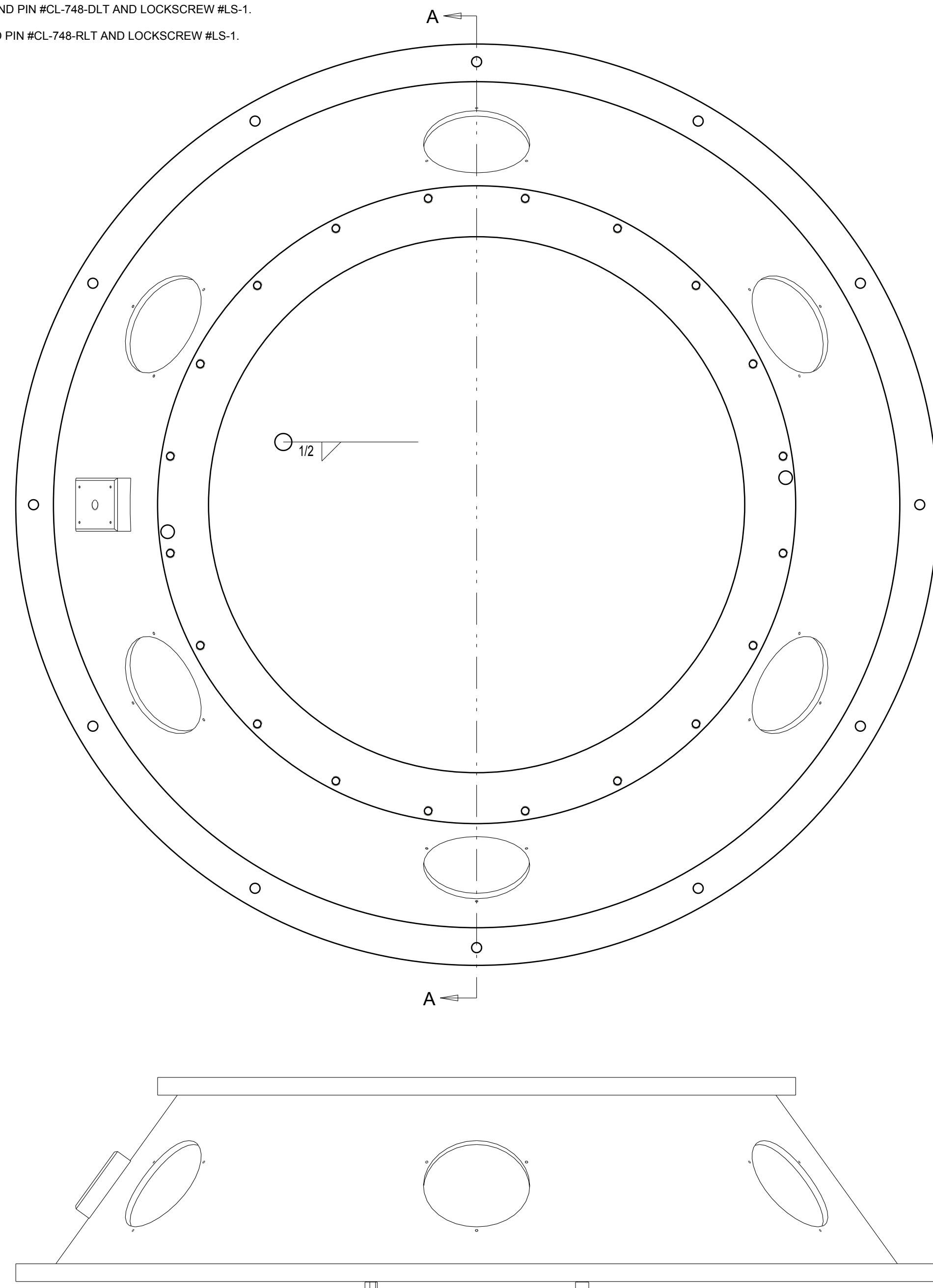


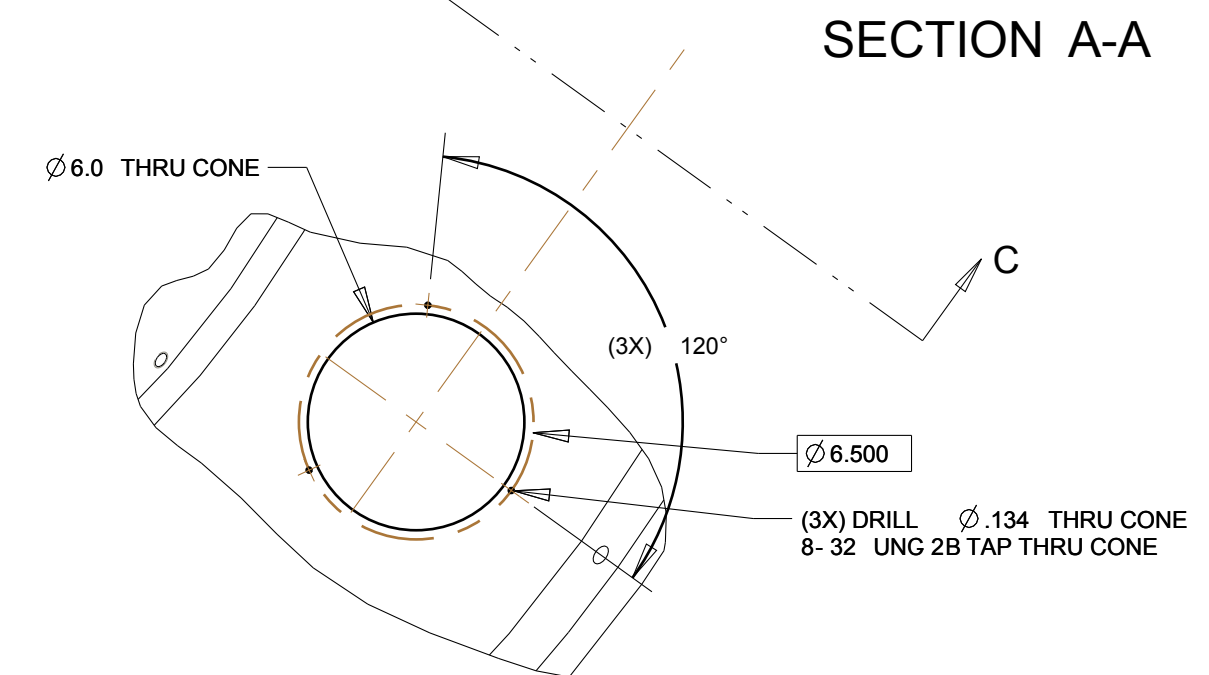
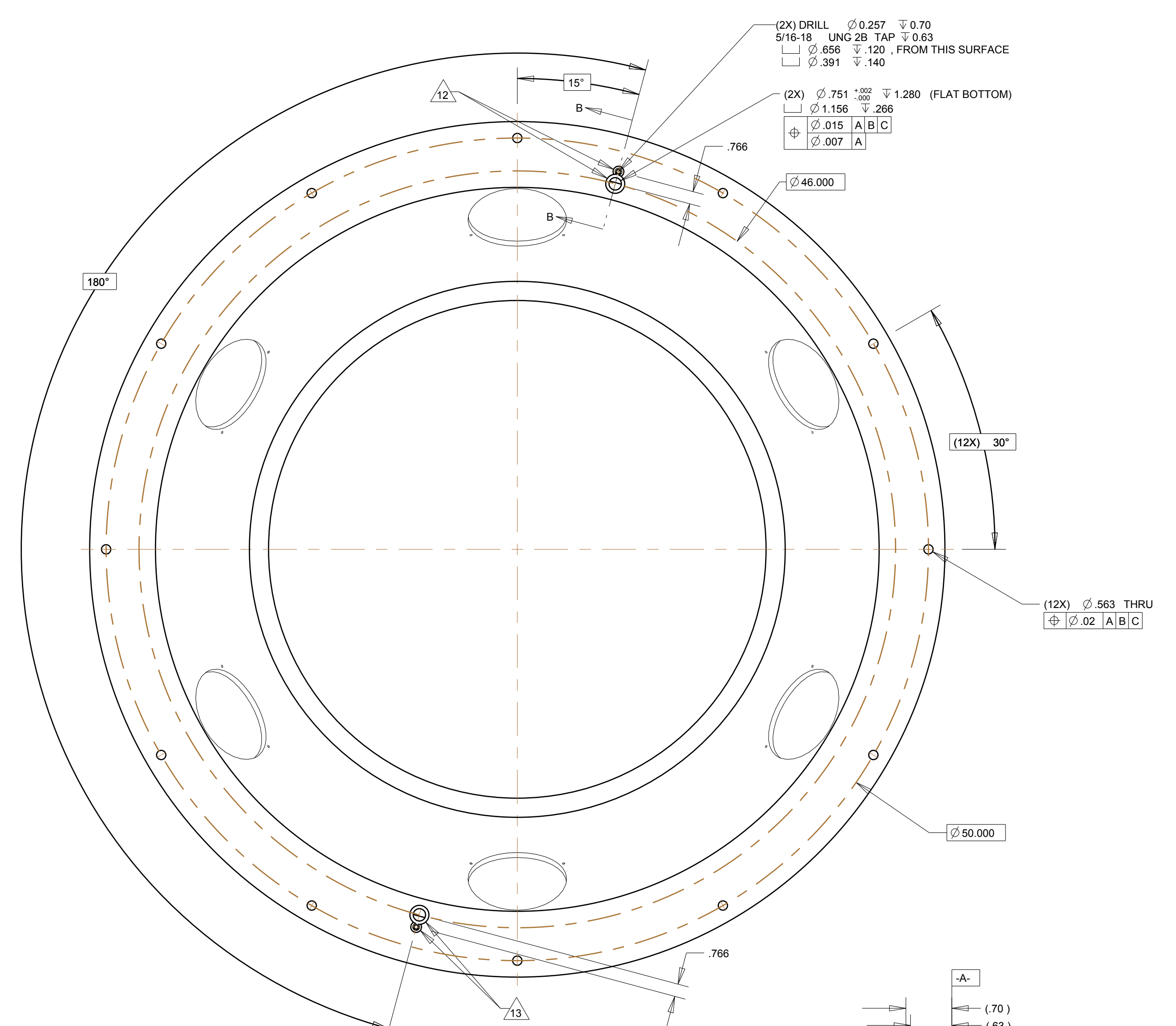
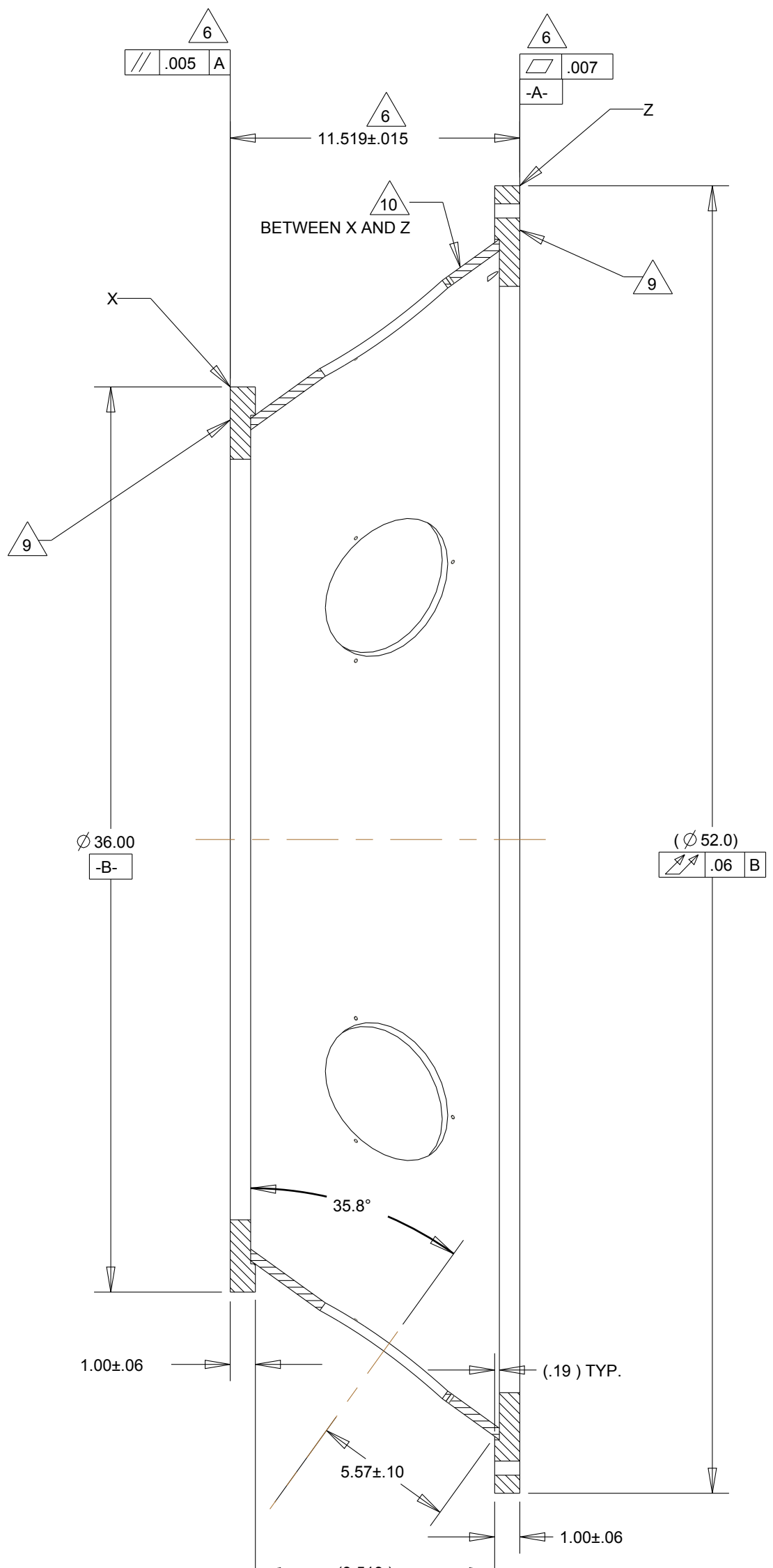
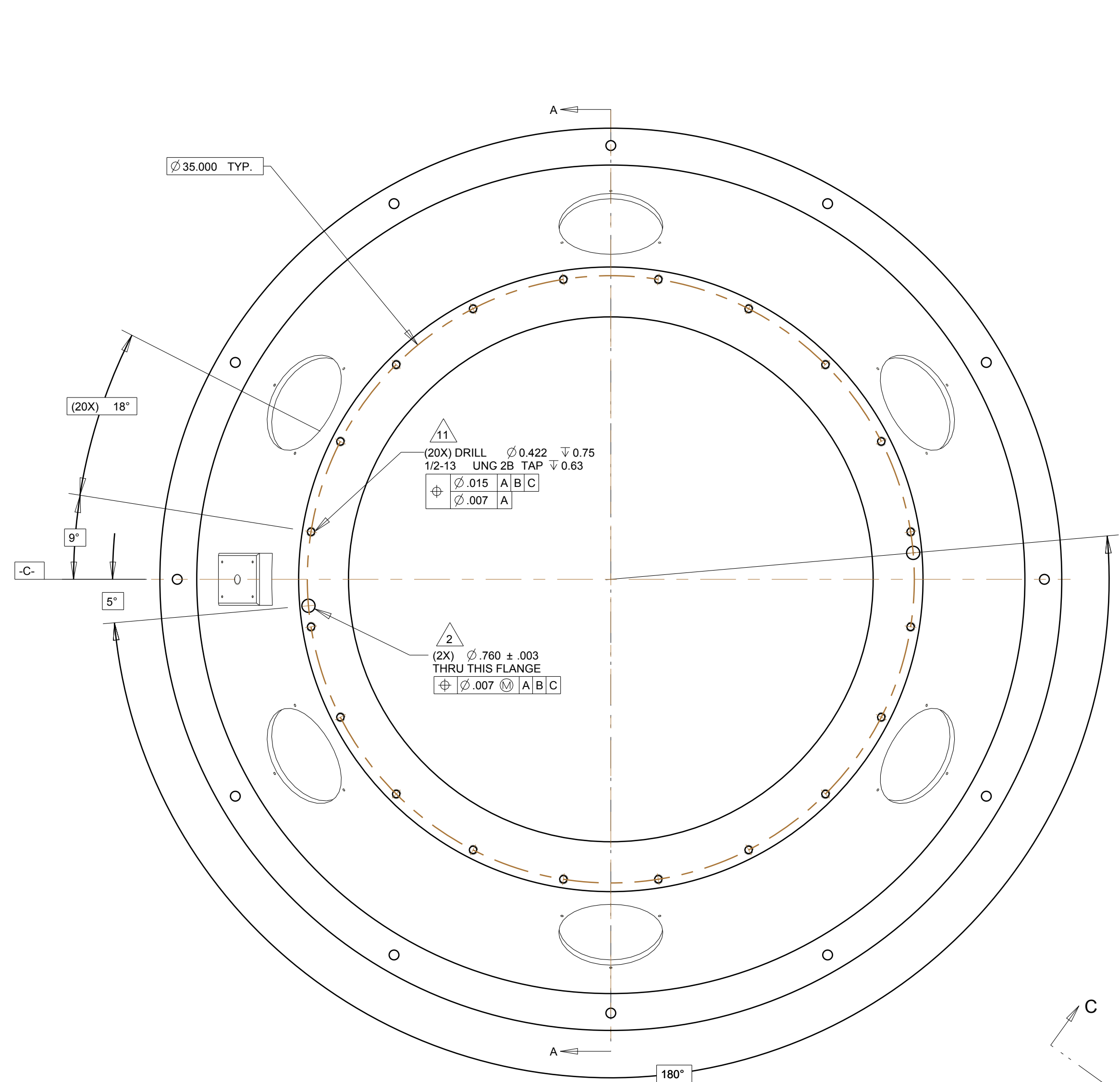
NOTES:

1. DEBUR ALL SHARP EDGES
2. ENSURE NO WELD (2X) AT (  $\phi$ \*\*\* ) HOLES
3. STRESS RELIEVE WELDMENT PRIOR TO MACHINING.
4. ALL MACHINED DIMENSION TOLERANCES APPLY AFTER WELDING AND FINISHING. BUILDUP PERMISSIBLE ON POWDER COATED SURFACES.
5. ALL DIMENSIONS AND TOLERANCES APPLY AT A TEMPERATURE OF 70° F (21° C).
6. AS-BUILT MEASUREMENT TO BE SUPPLIED TO CUSTOMER UPON COMPLETION.
7. CLEAN PART AFTER MACHINING TO REMOVE ALL GREASE AND OIL RESIDUE.
8. CHEMICAL FILM AS PER MIL-C-5541C CLASS 3 GOLD.
9. MASK ALL CRITICAL SURFACES & PLUG ALL THREADED/NON-THREADED HOLES, WITH THE EXCEPTION OF COUNTERBORES, PRIOR TO POWDER COAT.
10. POWDER COAT USING TIGER DRYLAC COLOR RAL-5022, PRODUCT CODE 49/42390. OVERCOAT USING TIGER DRYLAC "ANTI-GRAFITTI" CLEAR FINISH, PRODUCT CODE 44/00018. APPLY BOTH AS PER MANUFACTURERS SPECIFICATION. OVERSPRAY NOT PERMISSIBLE ON VACUUM AND SEALING/INTERFACE SURFACES.
11. INSTALL KEENSERT #KNL616J AS PER MANUFACTURE SPEC.
12. INSERT CARR LANE DIAMOND PIN #CL-748-DLT AND LOCKSCREW #LS-1.
13. INSERT CARR LANE ROUND PIN #CL-748-RLT AND LOCKSCREW #LS-1.

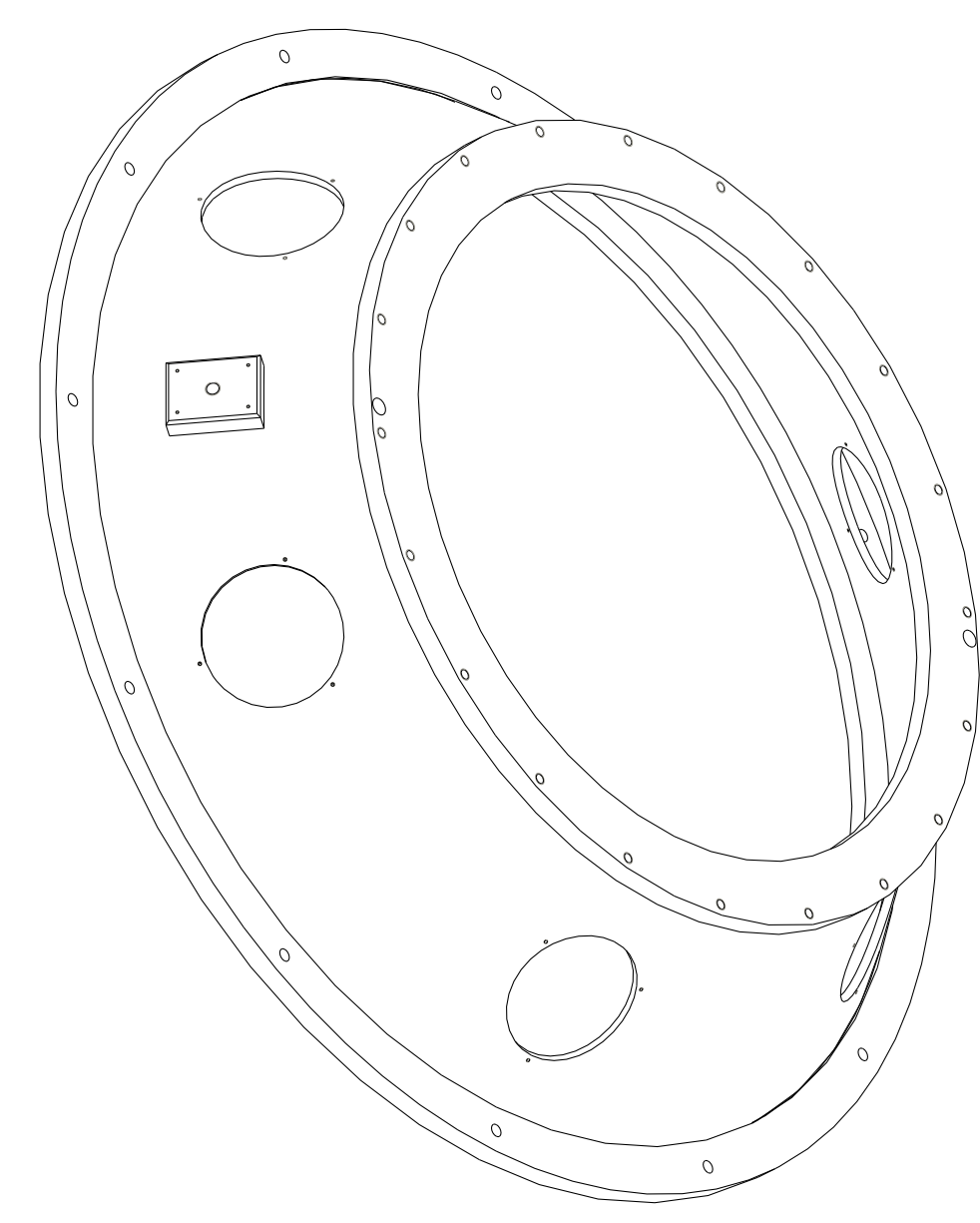
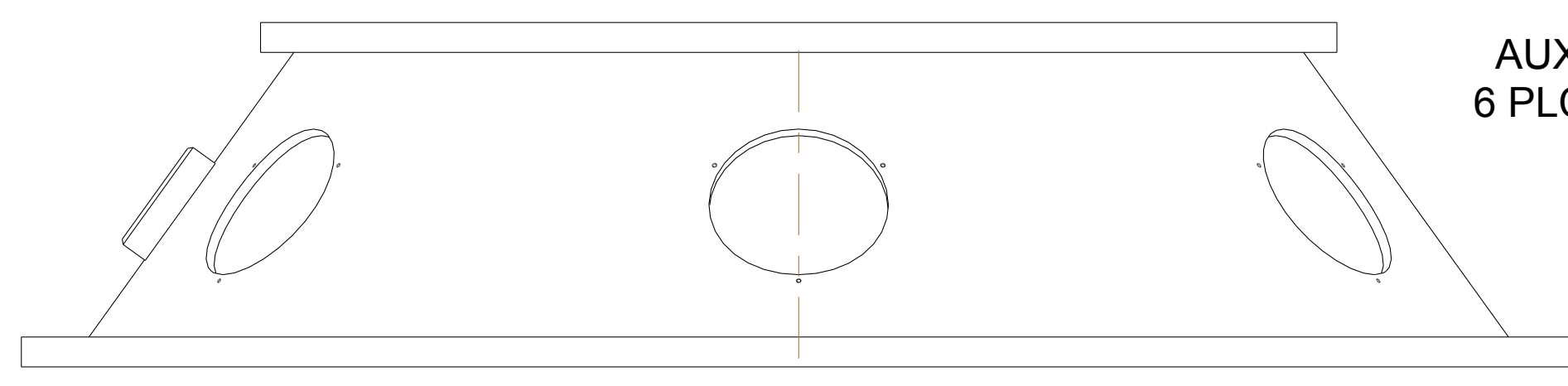
REV.	DESCRIPTION	DATE	APPROVAL
A	UPDATED HOLE FEATURES FOR ALIGNMENT PINS, ADDED NOTES 12 & 13 EGN0004	5/30/07	



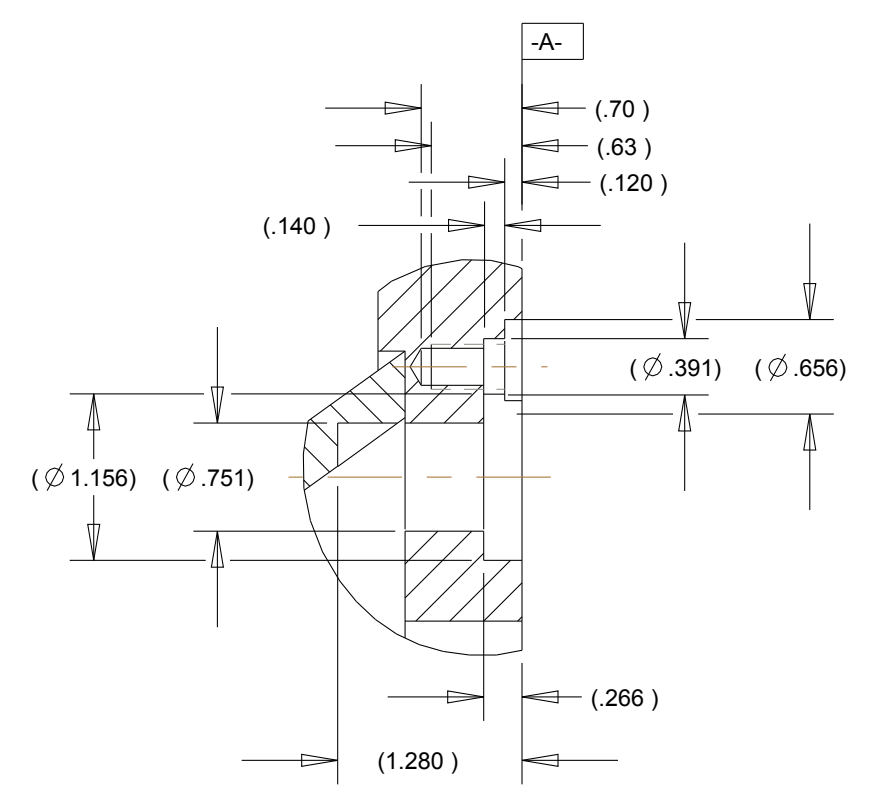
ITEM #	DWG. #	DESCRIPTION	QTY.
1	4-STAR-F-0001	Front Cone Flange	1
2	4-STAR-F-0002	Cone	1
3	4-STAR-F-0003	Front Cone Flange	1
4	4-STAR-F-0445	Cone Lift Brace	1
		***	
		01/05/07	***
		D	4-STAR-001
		3/16	1 OF 2



AUXILIARY VIEW C  
6 PLCS. EQ. SPACED



SCALE 1/8



SECTION B-B  
SCALE 3/4

<b>4-STAR</b>		<b>Conical Adapter</b>		
4-STAR-00	S. SMEE	D	<b>4-STAR-001</b>	A
		3/16	2 OF 2	