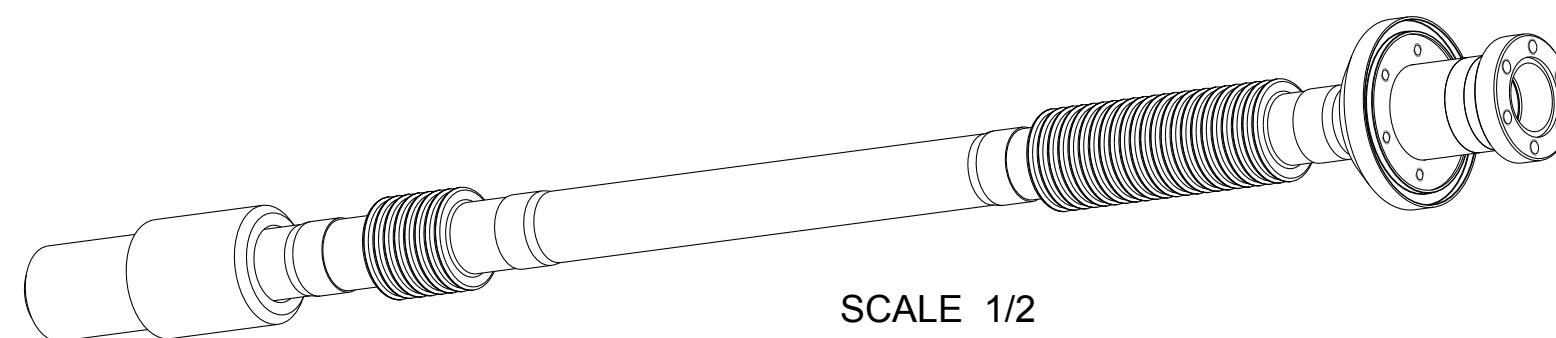
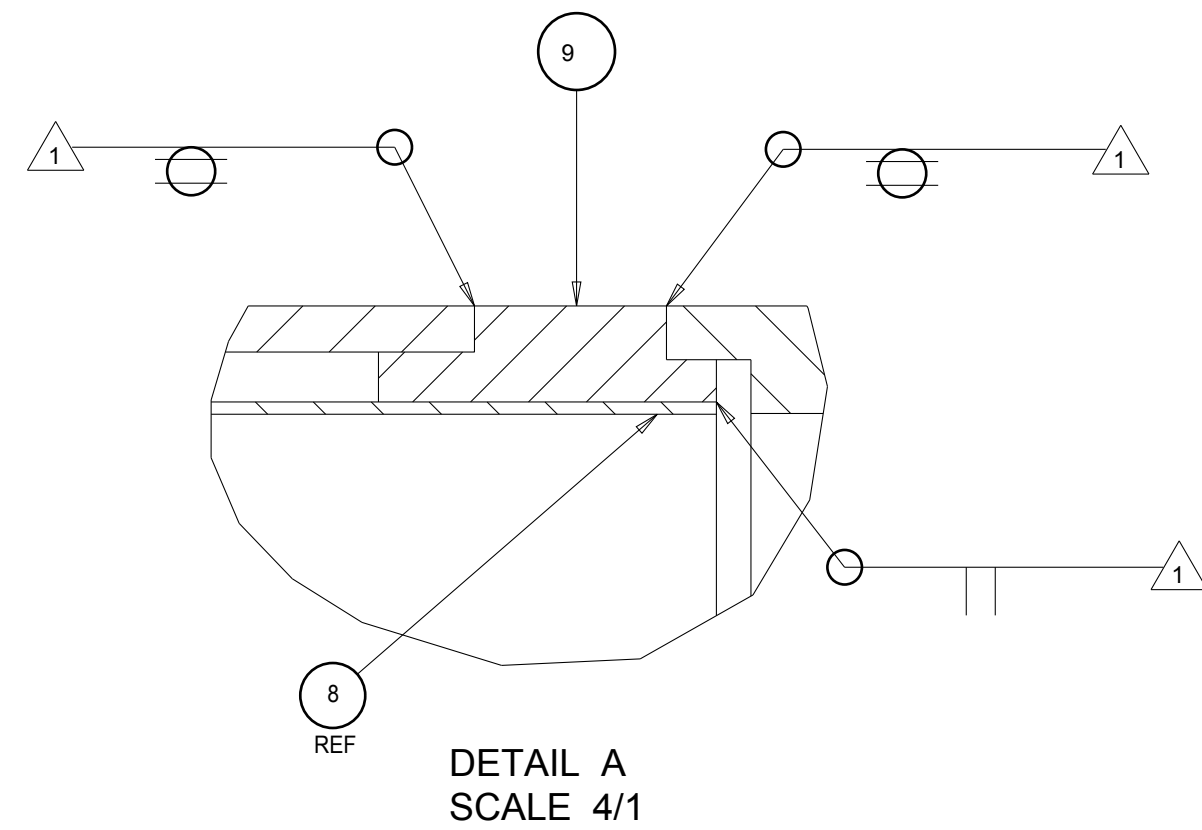
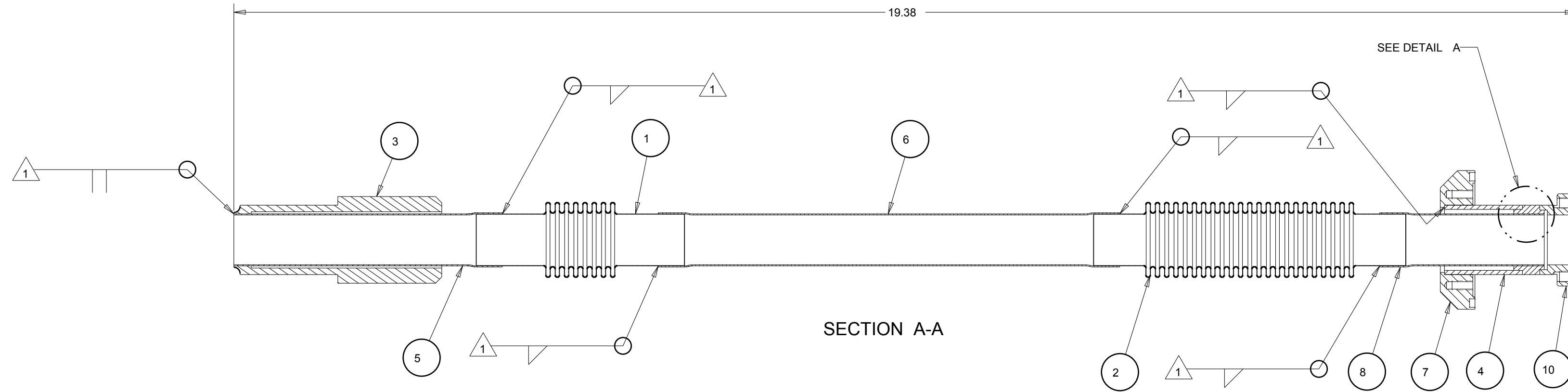


REV.	DESCRIPTION	DATE	APPROVAL
------	-------------	------	----------

NOTES:

WELDS SHALL BE VACUUM CAPABLE TO NOT EXCEED A LEAK RATE OF  $1 \times 10^{-9}$  STANDARD ATMOSPHERIC CCs PER SECOND OF HELIUM GAS



ITEM #	DWG. #	DESCRIPTION	QTY.
1	4-STAR-A-0105	3/4 X 1 SS Bellows	1
2	4-STAR-A-0171	3/4 X 3 SS Bellows	1
3	4-STAR-F-0088	Bi-Braze SS-Al Transition	1
4	4-STAR-F-0093	SD Fill Tube Extension	1
5	4-STAR-F-0102	DD Fill Tube Section 1	1
6	4-STAR-F-0103	DD Fill Tube Section 2	1
7	4-STAR-F-0107	Fill Tube Flange	1
8	4-STAR-F-0122	SD Fill Tube Section 2	1
9	4-STAR-F-0172	Transition Washer, Tube Sleeve	1
10	4-STAR-F-1023	Conflat Union for LN2 Fill	1

<b>4-STAR</b>		<b>DD Fill Tube Assm</b>		
4-STAR-009	S. SMEE	C	4-STAR-034	-
		3/4	1 OF 1	