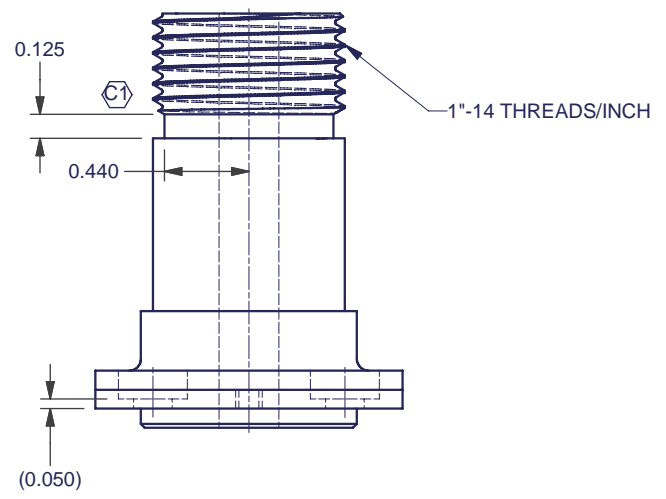
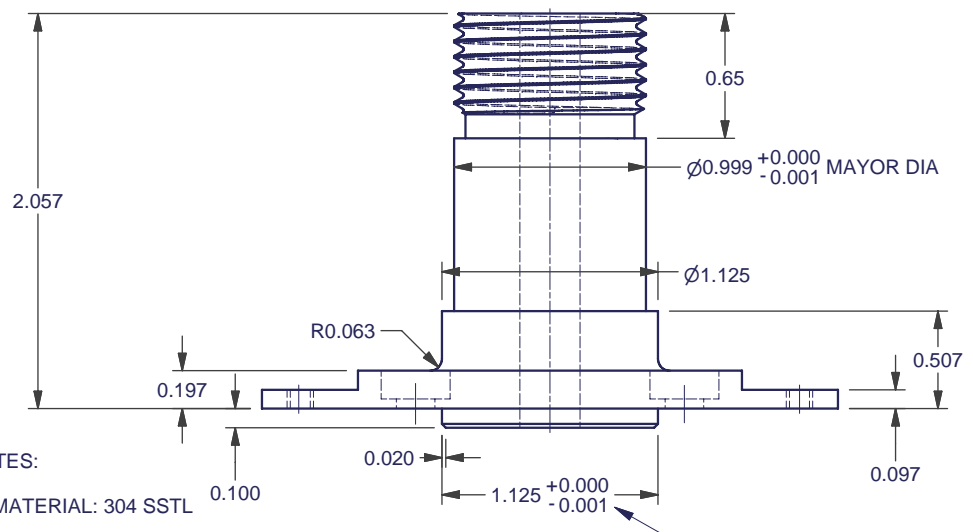


SCALE 1 : 1



SCALE 1 : 1

FITS INTO PART FS-13-002

- NOTES:
- 1 MATERIAL: 304 SSTL
 - 2 FINISH: NONE
 - 3 QTY REQ'D:1

REV	CHANGES	DATE	BY	MATERIAL:	UNLESS OTHERWISE SPECIFIED: DIMENSIONS ARE IN INCHES BRAKE EDGES / REMOVE BURRS	**** FourStar	FS-03-002	FFW	THE OBSERVATORIES CARNEGIE INSTITUTION OF WASHINGTON 813 SANTA BARBARA STREET PASADENA, CA. 91101-1232		DWG NO. FS-13-003	REV. D SHT 1 OF 1
A	Production	2/19/2007	ERK	1			TOLERANCES:	NEXT ASSY				
B	was 0.406	3/11/2007	ERK	FINISH:	X.X±0.1	ANGLES:0.5°	APPLICATION		SUPPORT, BEARING AXLE FFW			
C	was 0.120	3/14/2007	ERK	2	X.XX±0.01	FRACTIONS:± 1/16	Designer: Persson	7/20/2006				
C1	Thread End	3/30/2007	ERK	SCALE:	X.XXX±0.003		Drawn: Koch	7/20/2006				
D	6-32 holes	8/12/2008	EP	As Noted								