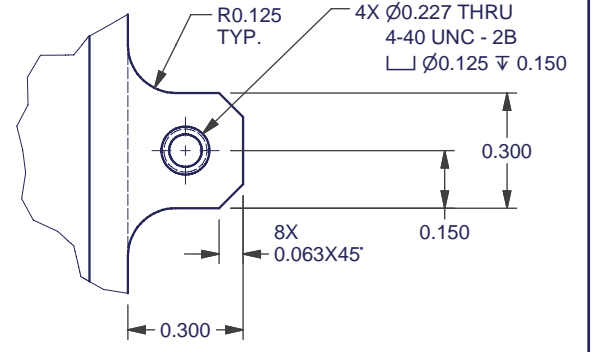
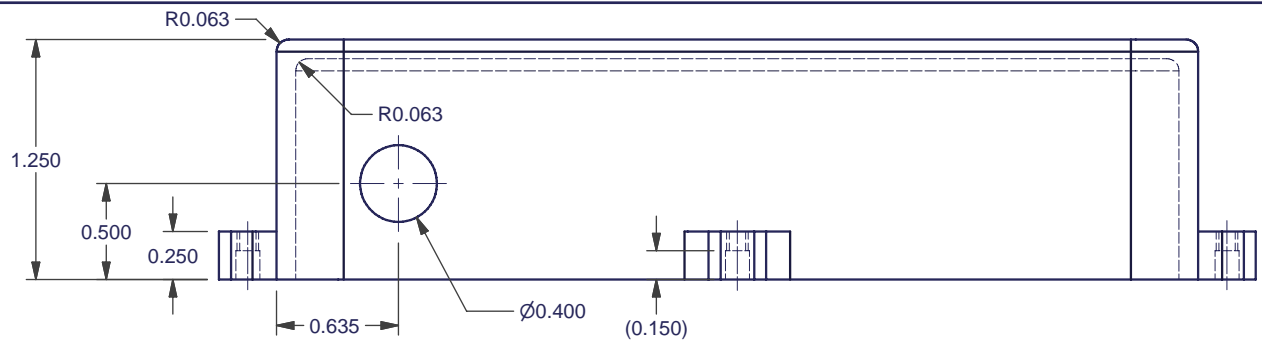


SCALE 1 : 1

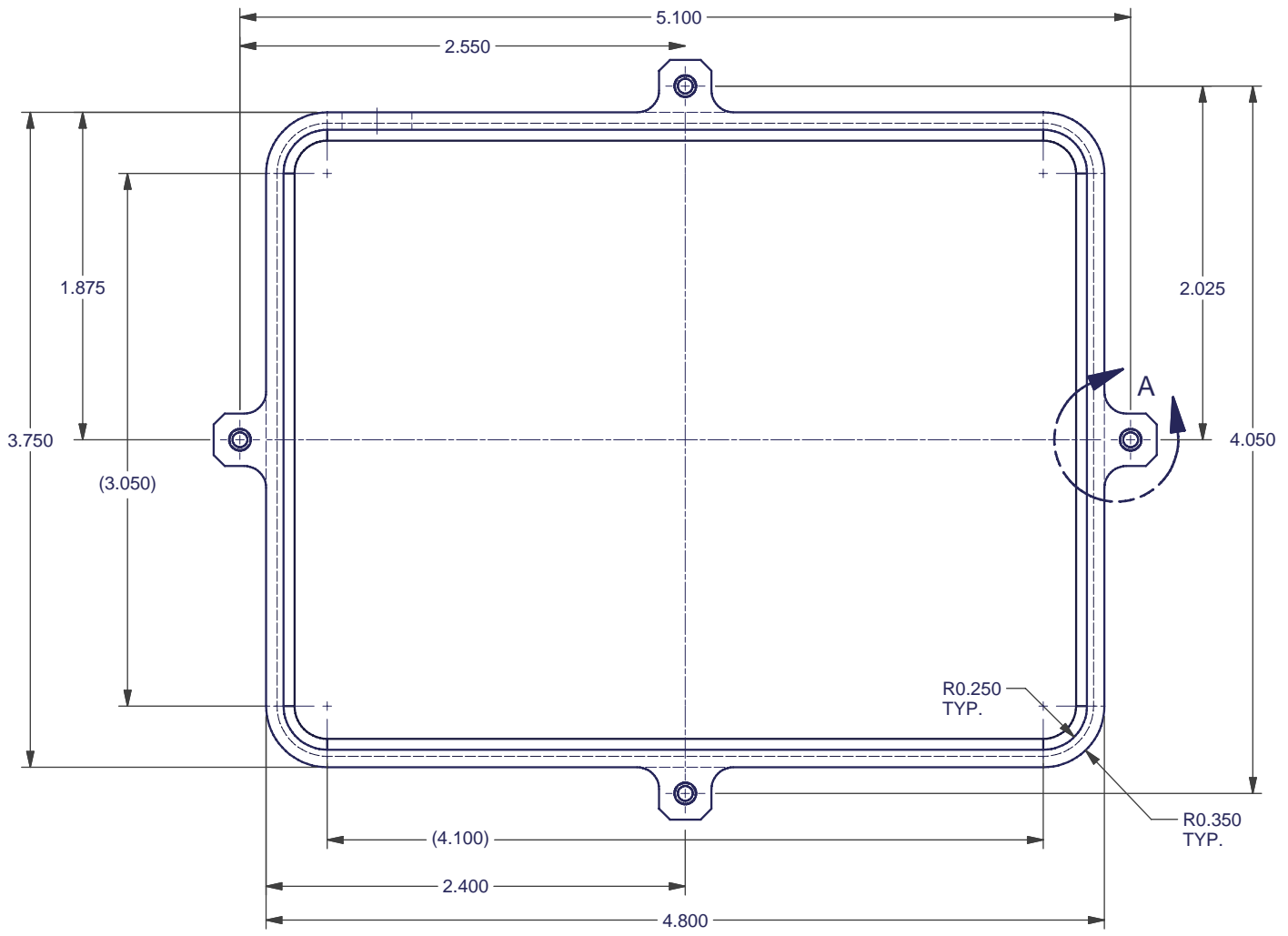
NOTES:

- 1 MATERIAL: AL 6061-T6
- 2 FINISH: NONE
- 3 QTY REQ'D: 1

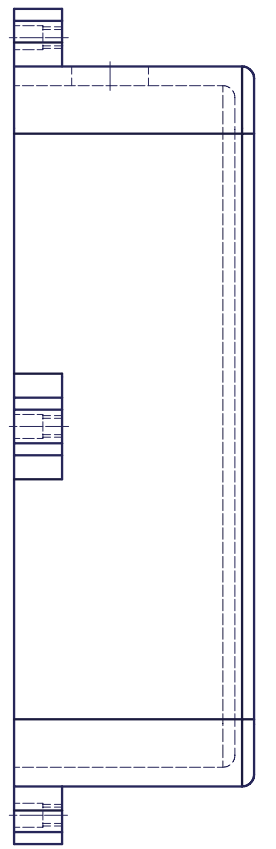
REV	CHANGES	DATE	BY	MATERIAL:	UNLESS OTHERWISE SPECIFIED: DIMENSIONS ARE IN INCHES BRAKE EDGES / REMOVE BURRS	**** FourStar	FS-06-002	FFW COVER	<h1>THE OBSERVATORIES</h1> <p>CARNEGIE INSTITUTION OF WASHINGTON 813 SANTA BARBARA STREET PASADENA, CA. 91101-1232</p>		
A	Production	2/9/2008	ERK	1			TOLERANCES:	NEXT ASSY			USED ON
				FINISH:	ANGLES:0.5°		APPLICATION				
				2	X.X± 0.03		Designer: Persson	12/5/2004			
				SCALE:	X.XX± 0.01	FRACTIONS:± 1/16	Drawn: Koch	2/9/2008	Drawings Printed on:	2/9/2008	
				As Noted	X.XXX± 0.003	<b>DO NOT SCALE DRAWING</b>					
								COVER,FFW POSITION SWITCH		DWG NO. <b>FS-16-005</b>	REV. <b>A</b> SHT 1 OF 2



DETAIL A  
SCALE 2 : 1



SCALE 1 : 1



**** FourStar	DWG. NO.	REV. <b>A</b>
	<b>FS-16-005</b>	SHT 2 OF 2